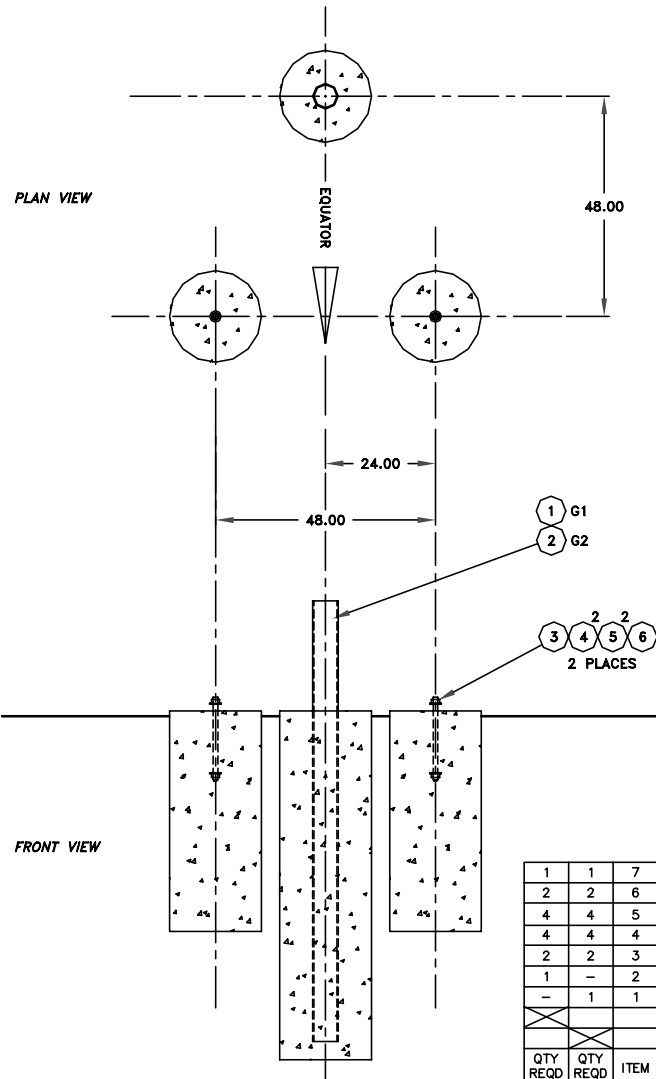
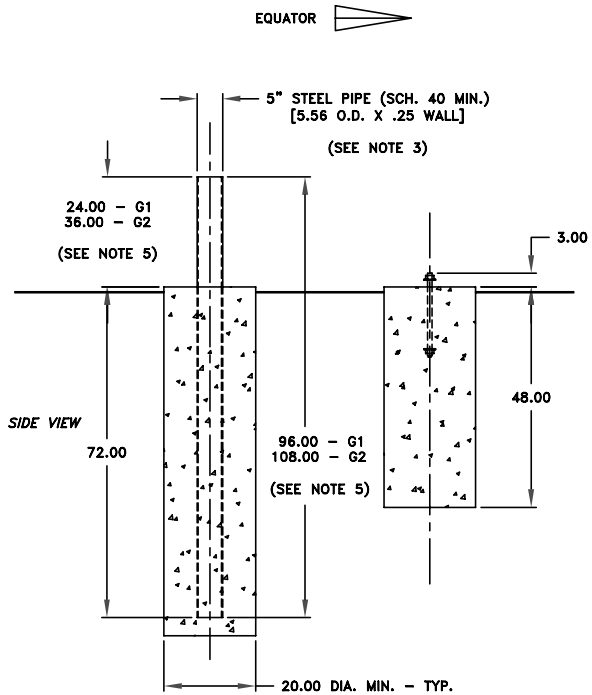


| ECN | DESCRIPTION | DATE | APPV'D |
|-----|--------------|------------|--------|
| A | ECN CAC-3985 | DLT 8-4-99 | |

G1 - SHOWN



- NOTES:
- 1 - CONCRETE AND PIPE SUPPLIED BY CUSTOMER.
 - 2 - CONCRETE MUST MEET 28 DAY COMPRESSIVE STRENGTH OF 3000 PSF.
 - 3 - FILL PIPE WITH CONCRETE.
 - 4 - FOUNDATION TO BE IN ACCORDANCE WITH LOCAL BUILDING CODE.
 - 5 - USE EXTENDED FOUNDATION (G2) FOR 3.8M EL/AZ IF ELEVATION LOOK ANGLE IS BELOW 18°.



ORIGINAL DESIGN
 3 / 3.8M POLAR & EL/AZ
 120 MPH

| 1 | 1 | 7 | COM'L | CONCRETE | | | | |
|----------|----------|------|-------------|-------------------------|-----------|-----------------|-------|--|
| 2 | 2 | 6 | COM'L | LOCK WASHER 1 | STL. HDG | | | |
| 4 | 4 | 5 | COM'L | FLAT WASHER 1 | STL. HDG | | | |
| 4 | 4 | 4 | COM'L | HEX NUT 1-8 | STL. HDG | | | |
| 2 | 2 | 3 | COM'L | THREADED ROD 1-8 X 18" | STL. HDG | | | |
| 1 | - | 2 | COM'L | 5" PIPE (SCH 40) X 108" | STL. A-36 | | | |
| - | 1 | 1 | COM'L | 5" PIPE (SCH 40) X 96" | STL. A-36 | | | |
| | | | | 828018-G2 | ASSEMBLY | EXTENDED HEIGHT | | |
| | | | | 828018-G1 | ASSEMBLY | | | |
| QTY REQD | QTY REQD | ITEM | PART NUMBER | DESCRIPTION | MATERIAL | SPECIFICATION | NOTES | |
| G-2 | G-1 | | | | | | | |

| | | | | | | | | |
|---|---|-------------------------|-----------------|---|-----------------------------------|-------------------------|-----------------------|---------------------|
| TOLERANCES UNLESS OTHERWISE SPECIFIED: ALL DIMENSIONS SHOWN ARE IN INCHES. .X = ±.06 FRAC. = ± 1/64 .XX = ±.03 .XXX = ±.01 DEGREE = ±.5° THIS DRAWING AND ITS SPECIFICATIONS ARE THE PROPERTY OF COMTECH ANTENNA SYSTEMS AND ARE NOT TO BE REPRODUCED OR COPIED WITHOUT WRITTEN PERMISSION. | COMTECH ANTENNA SYSTEMS 3100 COMMUNICATIONS ROAD ST.CLOUD, FLORIDA 34769 (407)892-6111, FAX (407)957-3402 | DRAFTSMAN D. L. TOTH | DATE 3-23-93 | DRAWING NAME FOUNDATION OUTLINE | | | | |
| | | CHECKER | DATE | | 3.8M - POLAR & EL/AZ - 120 MPH | | | |
| | | ENG. APPROVAL | DATE | SCALE 1=28 | | CODE IDENT NO. 24854 | DRAWING NO. 828018 | SHEET(S): 1 of 1 |
| | | APPROVAL G. HIGGINS | | DATE 3-23-93 | REMOVE ALL SHARP EDGES AND DEBURR | | | |