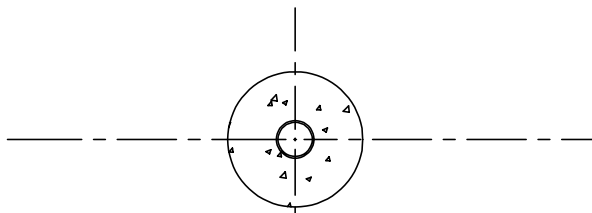
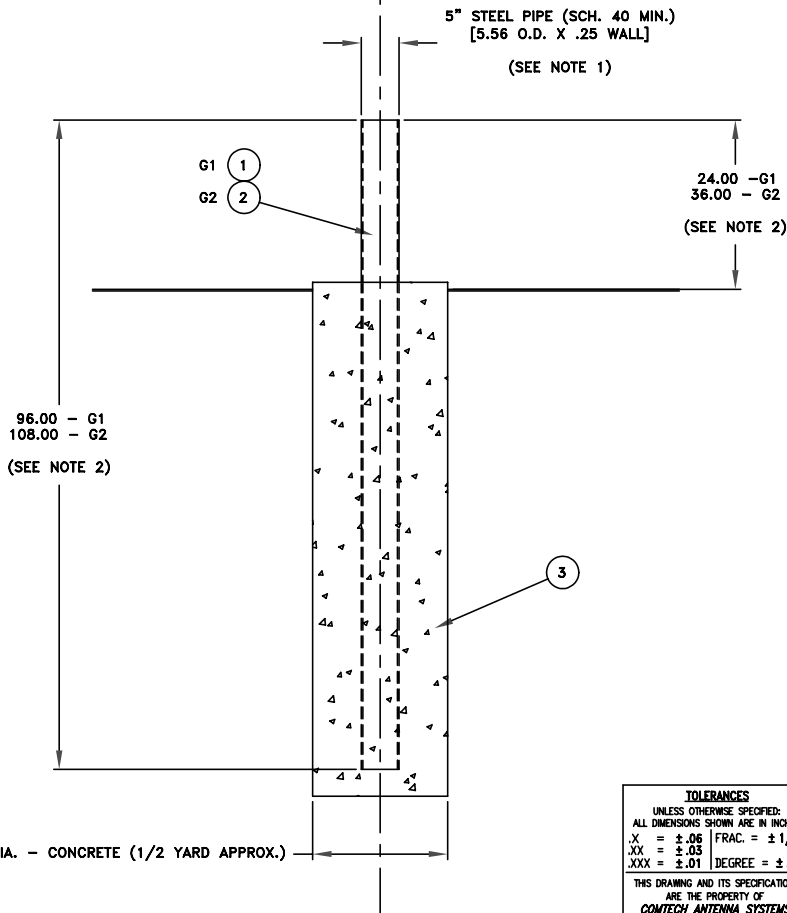


ECN	DESCRIPTION	DATE	APPV'D
E	ECN CAC-3983	DLT	8-3-99

PLAN VIEW



SIDE VIEW



- NOTES:
- 1 - FOR ALL 3.8M ANTENNA - FILL FOUNDATION PIPE WITH CONCRETE.
 - 2 - FOR 3.8M EL/AZ ANTENNA - IF ELEVATION LOOK ANGLE IS BELOW 18° INCREASE FOUNDATION PIPE LENGTH TO 108" WITH 36" EXTENDING ABOVE GROUND.
 - 3 - THIS IS A TYPICAL FOUNDATION. CONTRACTOR HAS FINAL RESPONSIBILITY FOR COMPLIANCE WITH LOCAL CODES.

ORIGINAL DESIGN
**3 / 3.8M POLAR & EL/AZ
 90 MPH**

G1 SHOWN

QTY REQD	QTY REQD	ITEM	PART NUMBER	DESCRIPTION	MATERIAL	SPECIFICATION	NOTES
1	1	3	COM'L	CONCRETE		.5 YARDS	
1	-	2	COM'L	5" PIPE (SCH 40) X 108"	STL. A-36		
-	1	1	COM'L	5" PIPE (SCH 40) X 96"	STL. A-36		
				SK-1431-G2	ASSEMBLY	EXTENDED HEIGHT	
				SK-1431-G1	ASSEMBLY		

TOLERANCES
 UNLESS OTHERWISE SPECIFIED:
 ALL DIMENSIONS SHOWN ARE IN INCHES.
 .X = ±.06 FRAC. = ± 1/64
 .XX = ±.03
 .XXX = ±.01 DEGREE = ±.5°

THIS DRAWING AND ITS SPECIFICATIONS ARE THE PROPERTY OF COMTECH ANTENNA SYSTEMS AND ARE NOT TO BE REPRODUCED OR COPIED WITHOUT WRITTEN PERMISSION.

COMTECH ANTENNA SYSTEMS
 3100 COMMUNICATIONS ROAD
 ST. CLOUD, FLORIDA 34769
 (407)892-6111, FAX (407)957-3402

DRAFTSMAN D. L. TOTH	DATE: 7-19-85	DRAWING NAME FOUNDATION OUTLINE	
CHECKER	DATE:	3/3.8M - POLAR & EL/AZ - 90 MPH	
ENG. APPROVAL	DATE:	SCALE 1=20	CODE IDENT NO. 24854
APPROVAL G. HIGGINS	DATE: 1-11-90	DRAWING NO. SK-1431	SHEET(S): 1 of 1
CONTRACT NO.	REMOVE ALL SHARP EDGES AND DEBURR	REV. E	