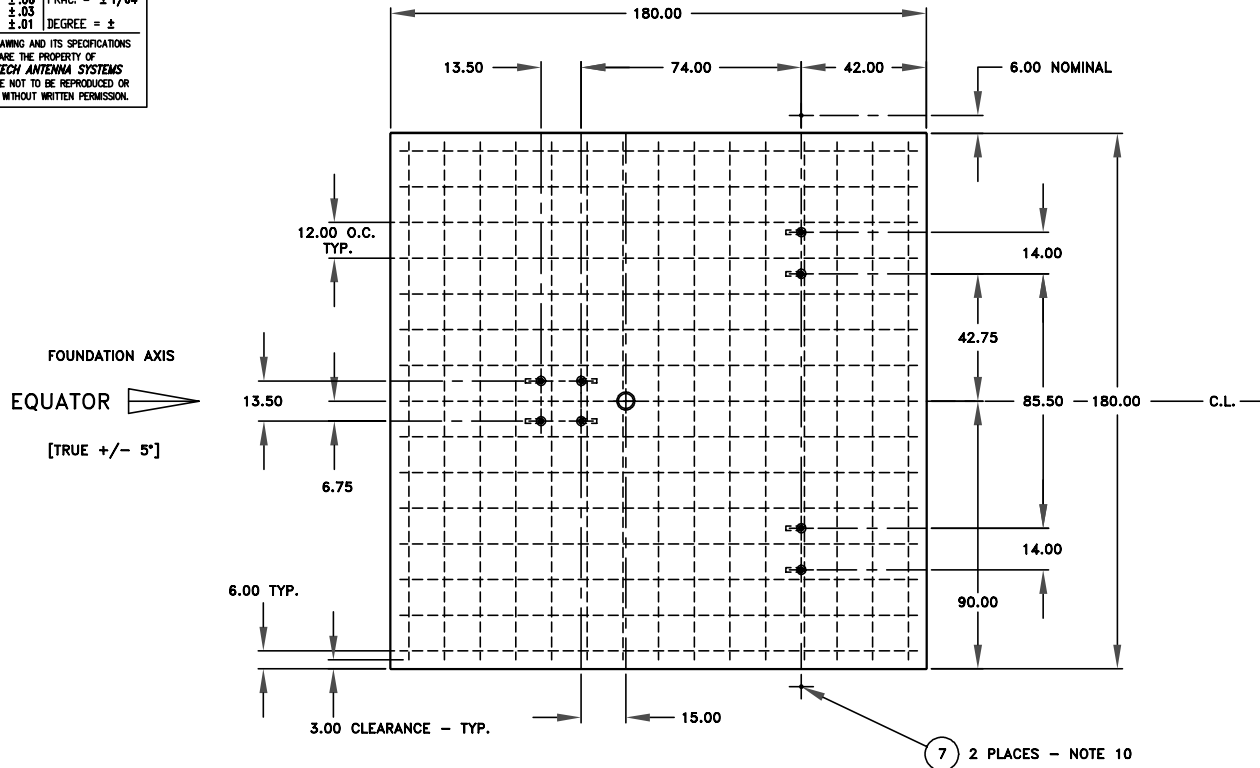


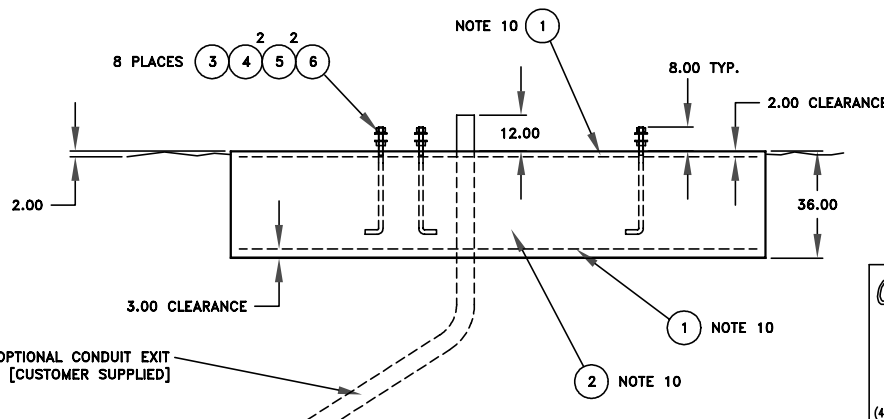
**TOLERANCES**  
 UNLESS OTHERWISE SPECIFIED:  
 ALL DIMENSIONS SHOWN ARE IN INCHES.  
 .X = ±.06 | FRAC. = ±1/64  
 .XX = ±.03 | DEGREE = ±  
 .XXX = ±.01

THIS DRAWING AND ITS SPECIFICATIONS  
 ARE THE PROPERTY OF  
**COMTECH ANTENNA SYSTEMS**  
 AND ARE NOT TO BE REPRODUCED OR  
 COPIED WITHOUT WRITTEN PERMISSION.

| ECN | DESCRIPTION  | DATE | APPV'D  |
|-----|--------------|------|---------|
| E   | ECN CAC-4914 | DLT  | 6-30-03 |



- NOTES:
- 1 - THE MINIMUM CONCRETE COMPRESSIVE STRENGTH SHALL BE 2500 PSI AT 28 DAYS IN ACCORDANCE WITH ACI-318
  - 2 - THE REINFORCING STEEL SHALL BE ASTM A305 GRADE 40 DEFORMED BARS.
  - 3 - REINFORCING STEEL SHALL BE CLEANED BY WIRE BRUSHING OR OTHER SUITABLE MEANS TO REMOVE RUST OR SCALE.
  - 4 - CONCRET SHALL BE PLACED ON UNDISTURBED SOIL, IN THE EVENT OF OVERCUTTING, THE EXCAVATION SHALL BE BACK FILLED IN 6 INCH LIFTS AND SHALL BE COMPACTED TO MAXIMUM DENSITY AT 95% OPTIMUM MOISTURE CONTENT.
  - 5 - FRAMEWORK IS NECESSARY FOR THE TOP 12 INCHES ONLY UNLESS UNSTABLE SOIL CONDITIONS ARE ENCOUNTERED, IN WHICH CASE FRAMEWORK WILL BE REQUIRED FOR THE FULL DEPTH.
  - 6 - THE CONCRETE SHALL BE CURED BY COVERING WITH BURLAP AND KEEPING DAMP FOR 3 DAYS. IN THE EVENT OF PLACEMENT DURING COLD WEATHER, ACI-306 RECOMMENDATIONS SHALL BE FOLLOWED.
  - 7 - THE FRESHLY POURED CONCRETE SHALL BE VIBRATED TO REMOVE TRAPPED AIR AND TAMPED INTO THE CORNERS OF THE EXCAVATION AND FRAMEWORK AND AROUND THE EMBEDDED HARDWARE.
  - 8 - FOUNDATION DESIGN IS BASED ON MINIMUM SOIL BEARING OF 2000 P.S.F.
  - 9 - FOUNDATION CONTAINS 25 CUBIC YARDS OF CONCRETE.
  - 10 - ITEM'S 1-2+7 SUPPLIED BY FOUNDATION CONTRACTOR.
  - 11 - AT ASSEMBLY, IF SPACE BETWEEN CONCRETE AND FOOT PLATES EXCEED 2", GROUT SPACE.
  - 12 - THIS IS A TYPICAL FOUNDATION. CONTRACTOR HAS FINAL RESPONSIBILITY FOR COMPLIANCE WITH LOCAL CODES.



| QTY REQD         | ITEM | PART NUMBER | DESCRIPTION             | MATERIAL         | SPECIFICATION | NOTES |
|------------------|------|-------------|-------------------------|------------------|---------------|-------|
| 2                | 7    | REF. ONLY   | GROUNDING RODS          |                  |               |       |
| 8                | 6    | COM'L       | LOCK WASHER 1-1/2"      | STL. A-307/A-325 | HDG           |       |
| 16               | 5    | COM'L       | FLAT WASHER 1-1/2"      | STL. A-307/A-325 | HDG           |       |
| 16               | 4    | COM'L       | HEX NUT 1-1/2" - 6,     | STL. A-307/A-325 | HDG           |       |
| 8                | 3    | 837009-1    | ANCHOR BOLT 1-1/2" - 6, | STL. A-307/A-325 | HDG           |       |
| 1                | 2    | REF. ONLY   | CONCRETE                | 25 CU. YDS.      |               |       |
| 60               | 1    | REF. ONLY   | RE-BAR #6 X 14.5 FT.    | STL. A305        | GR40          | 1350# |
| X                |      | 847010-G1   | ASSEMBLY                |                  |               |       |
| LIST OF MATERIAL |      |             |                         |                  |               |       |

**COMTECH ANTENNA SYSTEMS**  
 3100 COMMUNICATIONS ROAD  
 ST. CLOUD, FLORIDA 34789  
 (407)892-6111, FAX (407)957-3402

DRAFTSMAN: D. L. TOTH | DATE: 1-19-83  
 CHECKER: GFH | DATE: 12-27-83  
 ENG. APPROVAL: G. HIGGINS | DATE: 1-4-84  
 APPROVAL: P. WINDUS | DATE: 1-4-84

CONTRACT NO. REMOVE ALL SHARP EDGES AND DEBURR

DRAWING NAME: **FOUNDATION ASSEMBLY 7.31M POLAR**

SCALE: 1=45 | CODE IDENT NO. 24854 | DRAWING NO. 847010

SHEET(S): 1 OF 1 | REV. E