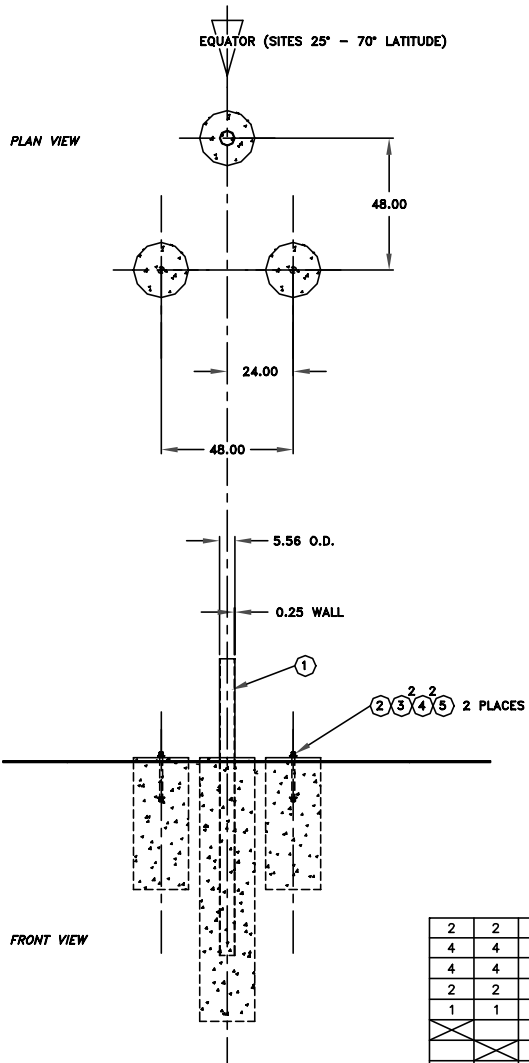
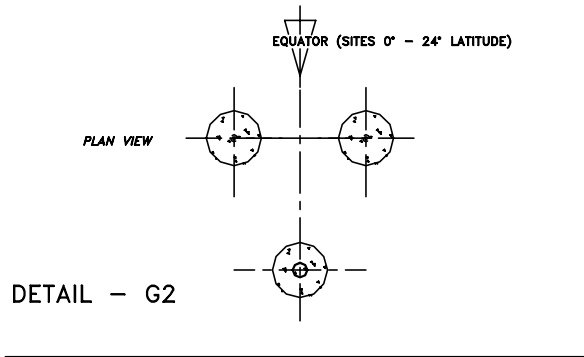
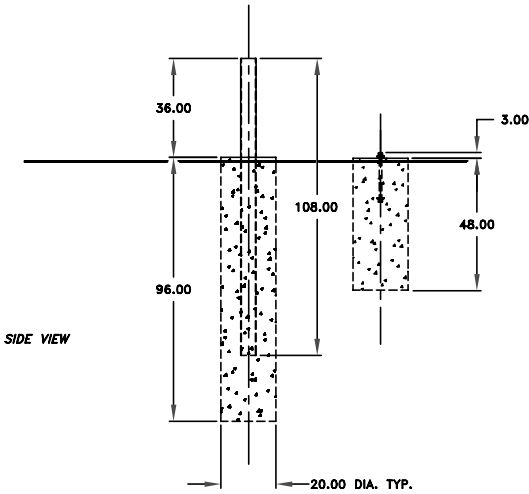


ECN	DESCRIPTION	DATE	APPV'D
B	ECN CAC-3510	DLT	6-6-97



- NOTES:
- 1 - CONCRETE AND 5" PIPE SUPPLIED BY CUSTOMER.
  - 2 - CONCRETE MUST MEET 28 DAY COMPRESSIVE STRENGTH OF 3000 PSI.
  - 3 - FILL PIPE WITH CONCRETE.
  - 4 - FOUNDATION TO BE IN ACCORDANCE WITH LOCAL BUILDING CODE.
  - 5 - G1 - FOR SITE LATITUDES FROM 25° TO 70°.  
G2 - (ROTATED 180°) FOR SITE LATITUDES FROM 0° TO 24°.

NEW DESIGN  
3.8M INCLINED & POLAR  
120 MPH



QTY REQD	QTY REQD	ITEM	PART NUMBER	DESCRIPTION	MATERIAL	SPECIFICATION	NOTES
2	2	5	COM'L	LOCK WASHER 1	STL. A-36	A307 HDG	
4	4	4	COM'L	FLAT WASHER 1	STL. A-36	A307 HDG	
4	4	3	COM'L	HEX NUT 1-8	STL. A-36	A307 HDG	
2	2	2	COM'L	THREADED ROD 1-8 X 18	STL. A-36	A307 HDG	
1	1	1	COM'L	5" PIPE (SCH 40) X 108"	STL. A-36		
			828007-G2	ASSEMBLY		(ROTATED 180°)	
			828007-G1	ASSEMBLY			

**TOLERANCES**  
UNLESS OTHERWISE SPECIFIED:  
ALL DIMENSIONS SHOWN ARE IN INCHES.  
.X = ±.06    FRAC. = ± 1/64  
.XX = ±.03  
.XXX = ±.01    DEGREE = ±.5°

THIS DRAWING AND ITS SPECIFICATIONS ARE THE PROPERTY OF COMTECH ANTENNA SYSTEMS AND ARE NOT TO BE REPRODUCED OR COPIED WITHOUT WRITTEN PERMISSION.

**COMTECH ANTENNA SYSTEMS**  
3100 COMMUNICATIONS ROAD  
ST.CLOUD, FLORIDA 34769  
(407)892-6111, FAX (407)957-3402

DRAFTSMAN: D. L. TOTH  
CHECKER: [ ]  
ENG. APPROVAL: [ ]  
APPROVAL: [ ]  
CONTRACT NO. [ ]  
REMOVE ALL SHARP EDGES AND DEBURR

DRAWING NAME: FOUNDATION OUTLINE  
3.8M - INCLINED & POLAR - 120 MPH

SCALE: 1=50  
CODE IDENT NO.: 24854  
DRAWING NO.: 828007  
SHEET(S): 1 of 1  
REV.: B