

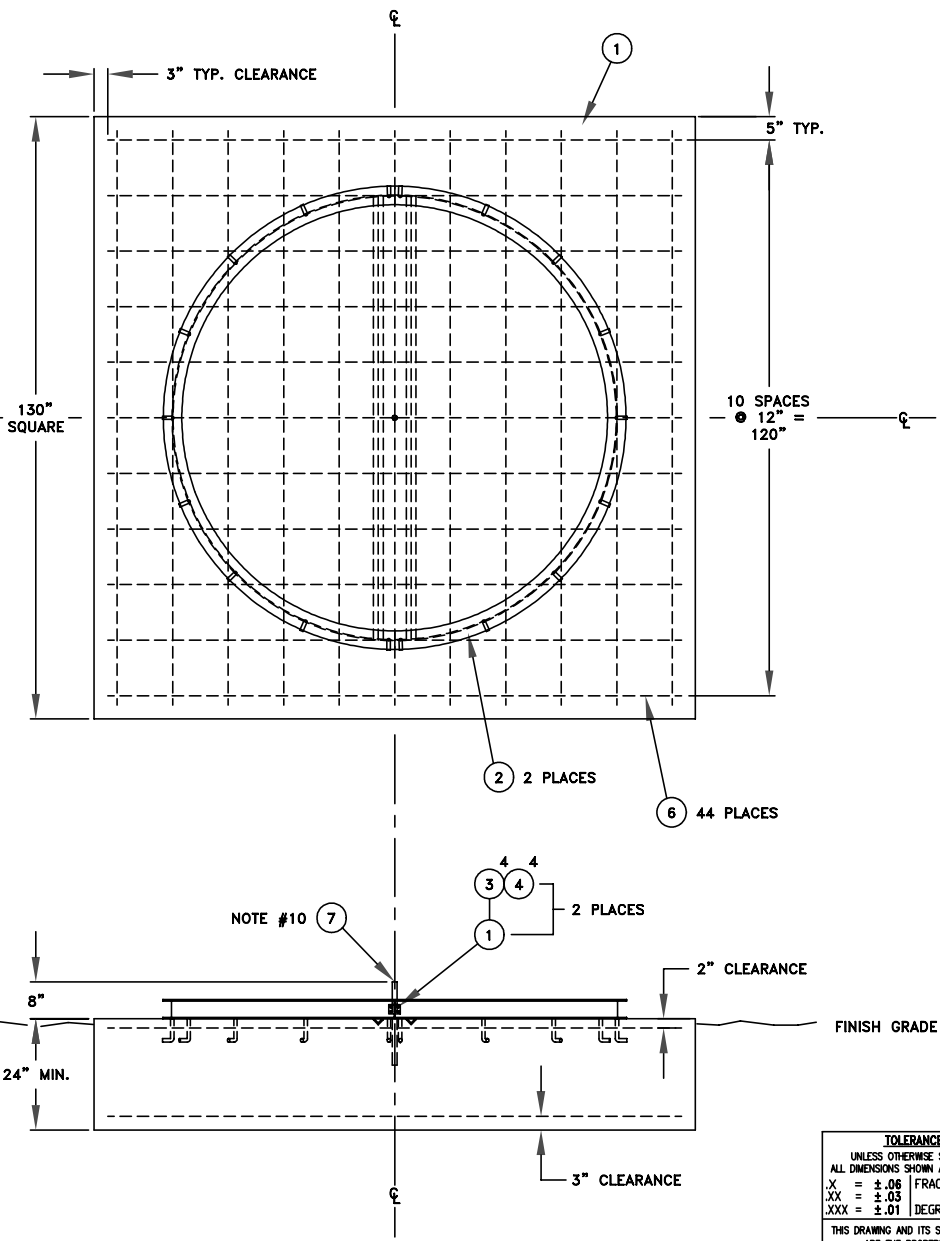
ECN	DESCRIPTION	DATE	APPV'D
H	ECN CAC-4150	DLT 1-27-00	

**NOTES:**

- 1 - THE AZIMUTH TRACK, DRAWING NO. 843716, SHALL BE SET IN PLACE, CENTERED AND LEVELED PRIOR TO CONCRETE PLACEMENT.
- 2 - THE MINIMUM CONCRETE COMPRESSIVE STRENGTH SHALL BE 2500 PSI AT 28 DAYS IN ACCORDANCE WITH ACI-318.
- 3 - THE REINFORCING STEEL SHALL BE ASTM A305 GRADE 40 DEFORMED BARS.
- 4 - REINFORCING STEEL SHALL BE CLEANED BY WIRE BRUSHING OR OTHER SUITABLE MEANS TO REMOVE RUST OR SCALE.
- 5 - CONCRETE SHALL BE PLACED ON UNDISTURBED SOIL. IN THE EVENT OF OVERCUTTING, THE EXCAVATION SHALL BE BACK FILLED IN 6 INCH LIFTS AND SHALL BE COMPACTED TO MAXIMUM DENSITY AT 95% OPTIMUM MOISTURE CONTENT.
- 6 - FRAMEWORK IS NECESSARY FOR THE TOP 12 INCHES ONLY UNLESS UNSTABLE SOIL CONDITIONS ARE ENCOUNTERED, IN WHICH CASE FRAMEWORK WILL BE REQUIRED FOR THE FULL DEPTH.
- 7 - THE CONCRETE SHOULD BE CURED BY COVERING WITH DAMP BURLAP AND KEEPING DAMP FOR 3 DAYS. IN THE EVENT OF PLACEMENT DURING COLD WEATHER, ACI 306 RECOMMENDATIONS SHALL BE FOLLOWED.
- 8 - THE FRESHLY POURED CONCRETE SHALL BE VIBRATED TO REMOVE TRAPPED AIR AND SHALL BE TAMPED INTO THE CORNERS OF THE EXCAVATION AND FRAMEWORK AND AROUND THE EMBEDDED HARDWARE.
- 9 - THE MAXIMUM ULTIMATE SOIL BEARING PRESSURE RESULTING FROM THIS FOUNDATION IS 1.4 KSF AT A WIND SPEED ON THE ANTENNA OF 125 MPH. THE ASSOCIATED ELEVATION ANGLE IS 0 DEGREES. FOR OTHER SOIL CONDITIONS AND ANTENNA ELEVATION ANGLES, CONSULT COMTECH ANTENNA CORP.
- 10 - OPTIONAL FOUNDATION ASSEMBLY 843712-G2 IS FOR USE WITH OPTIONAL AZIMUTH ADJUST KIT 847133-G1. LOCATE ITEM #7 IN CENTER OF RING O.D. WITHIN 3/16".
- 11 - THIS IS A TYPICAL FOUNDATION. CONTRACTOR HAS FINAL RESPONSIBILITY FOR COMPLIANCE WITH LOCAL CODES.

QTY REQD	QTY REQD	ITEM	PART NUMBER	DESCRIPTION	MATERIAL	SPECIFICATION	NOTES
1	-	7	843712-7	THREADED ROD 1"-8 X 18"	STL. ZINC		NOTE 10
44	44	6	REF. ONLY	#5 RE-BAR X10' - 4"	STL. A-305	GRADE 40	
1	1	5	REF. ONLY	CONCRETE		9 CUBIC YARDS	
8	8	4	COM'L	HEX NUT 3/8-16	STL. GRADE 5	HDG	
8	8	3	COM'L	HEX BOLT 3/8-16 X 1	STL. GRADE 5	HDG	
2	2	2	843716-G1	BOTTOM RING ASSEMBLY			
2	2	1	823703-1	SPLICE PLATE			
			843712-G2	ASSEMBLY	OPTIONAL		NOTE 10
			843712-G1	ASSEMBLY			

LIST OF MATERIAL



**TOLERANCES**  
 UNLESS OTHERWISE SPECIFIED:  
 ALL DIMENSIONS SHOWN ARE IN INCHES.  
 X = ±.06    FRAC. = ±1/64  
 XX = ±.03  
 XXX = ±.01    DEGREE = ±

THIS DRAWING AND ITS SPECIFICATIONS ARE THE PROPERTY OF **COMTECH ANTENNA SYSTEMS** AND ARE NOT TO BE REPRODUCED OR COPIED WITHOUT WRITTEN PERMISSION.

**COMTECH ANTENNA SYSTEMS**  
 3100 COMMUNICATIONS ROAD  
 ST. CLOUD, FLORIDA 34769  
 (407)892-6111, FAX (407)957-3402

DRAFTSMAN: D. L. TOTH    DATE: 10-30-81  
 CHECKER:    DATE:     
 ENG. APPROVAL: G. HIGGINS    DATE: 10-30-81  
 APPROVAL:    DATE:     
 CONTRACT NO.    REMOVE ALL SHARP EDGES AND DEBURR

DRAWING NAME: **FOUNDATION ASSEMBLY 5M & OFFSAT EL/AZ**

SCALE: 1=30    CODE IDENT NO. 24854    DRAWING NO. 843712    SHEET(S): 1 OF 1    REV. H